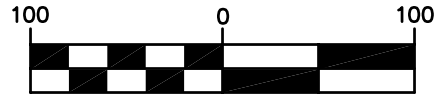
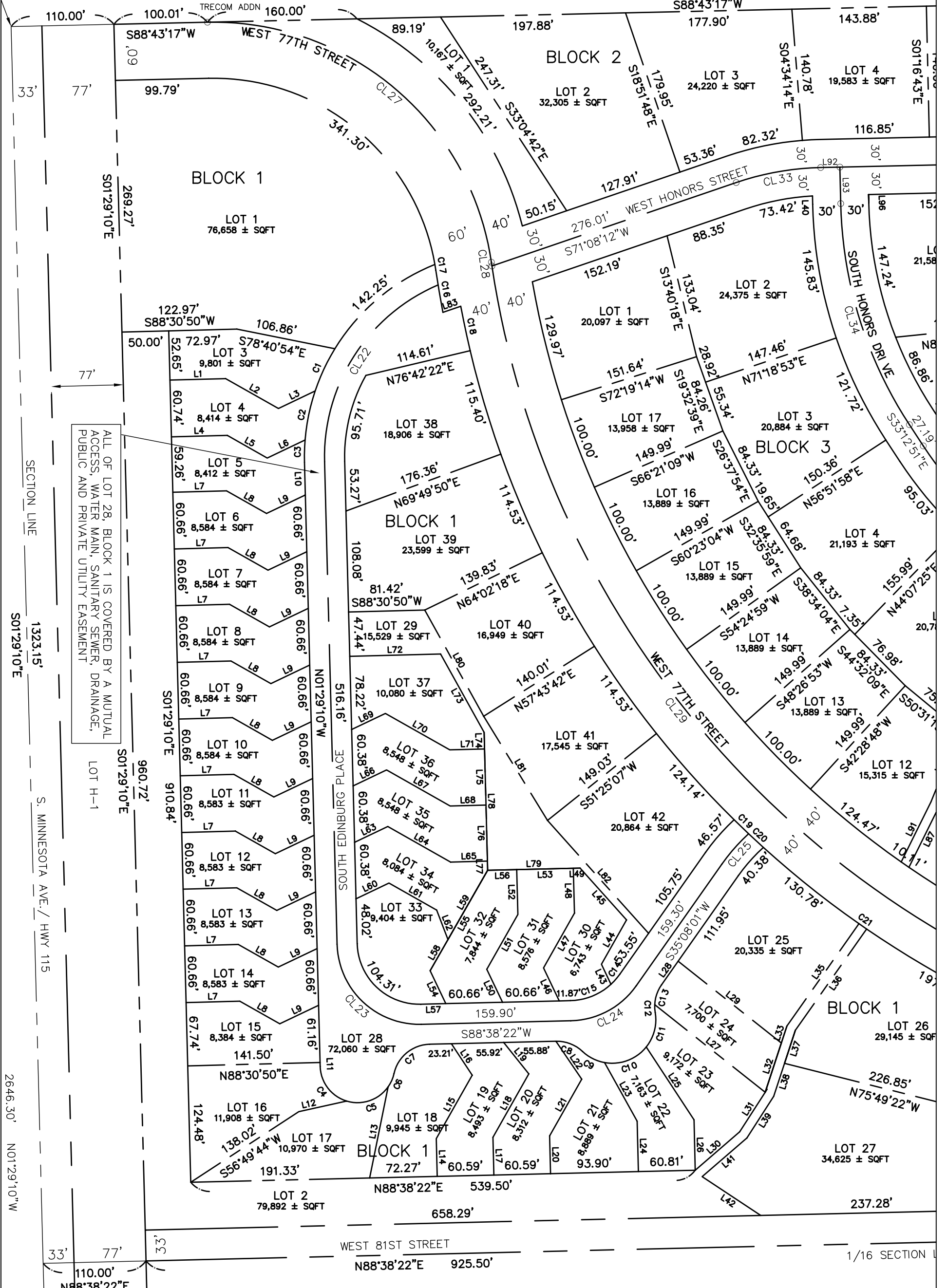


PLAT OF
LOTS 1-42, BLOCK 1; LOTS 1-17, BLOCK 2; LOTS 1-17,
BLOCK 3; LOTS 1-4, BLOCK 4; AND LOTS 1-3 BLOCK 5;
THE GRAND PRAIRIE
AN ADDITION TO THE CITY OF SIOUX FALLS,
LINCOLN COUNTY, SOUTH DAKOTA

SEE SHEET 3 OF 5 FOR VICINITY MAP



SET 5/8" REBAR W/CAP #3873
 FOUND IRON PIN
 UTILITY EASEMENT
 PUBLIC UTILITY ACCESS EASEMENT
 PUBLIC UTILITY EASEMENT



ALL OF LOT 28, BLOCK 1 IS COVERED BY A MUTUAL ACCESS, WATER MAIN, SANITARY SEWER, DRAINAGE, PUBLIC AND PRIVATE UTILITY EASEMENT

SECTION LINE
 1323.15'
 S. MINNESOTA AVE. / HWY 115
 2646.30'