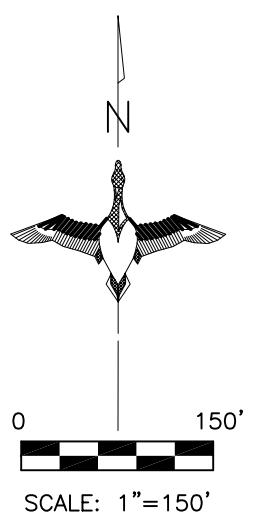
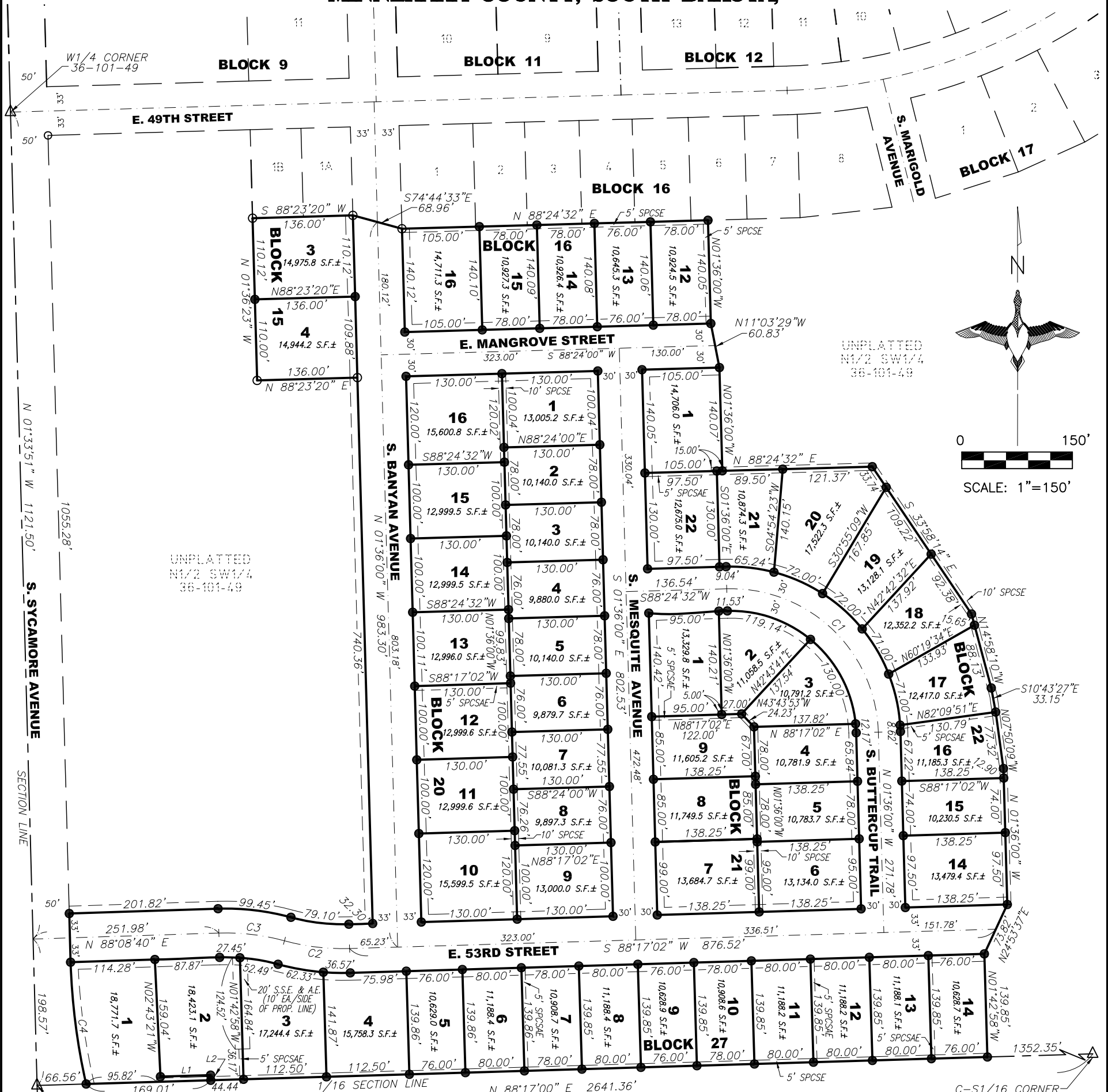


PLAT OF PRAIRIE GARDENS

AN ADDITION TO THE CITY OF SIOUX FALLS,
MINNEHAHA COUNTY, SOUTH DAKOTA,



UNPLATTED
N1/2 SW1/4
36-101-49

UNPLATTED
N1/2 SW1/4
36-101-49

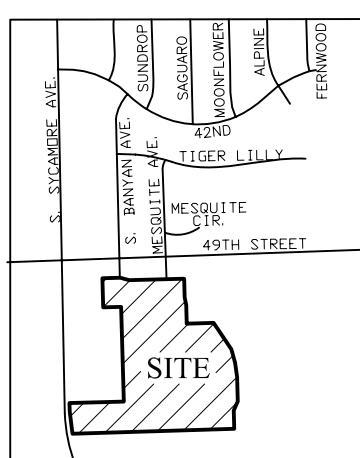
CURVE TABLE					
CURVE	RADIUS	ARC LENGTH	CHORD LENGTH	CHORD BEARING	DELTA ANGLE
C1	200.00'	314.13'	282.82'	S 46°35'44" E	89°59'28"
C2	300.00'	89.20'	88.87'	N 83°11'53" W	17°02'10"
C3	300.00'	89.93'	89.59'	N 83°16'04" W	17°10'32"
C4	873.83'	166.73'	166.48'	S 07°16'24" E	10°55'56"

C-S1/16 CORNER
36-101-49
(CALCULATED ON THE 1/4 SECTION
LINE, MID-DISTANCE BETWEEN THE
FOUND C1/4 CORNER MONUMENT &
THE FOUND S1/4 CORNER MONUMENT)

LINE TABLE		
LINE	BEARING	DISTANCE
L1	N 88°17'02" E	68.06'
L2	S 01°42'58" E	6.96'

LEGEND

- △ SECTION CORNER
 - SET 5/8" REBAR W/CAP #6700
 - FD. MONUMENT
 - (R) RECORD INFORMATION
 - AC. ACRES
 - S.F. SQUARE FEET
 - A.E. ACCESS EASEMENT
 - U.E. UTILITY EASEMENT
 - D.E. DRAINAGE EASEMENT
 - S.S.E. STORM SEWER EASEMENT
 - SPCSE SUMP PUMP COLLECTION SYSTEM EASEMENT
 - SPCSAE SUMP PUMP COLLECTION SYSTEM ACCESS EASEMENT
 - R/W RIGHT-OF-WAY
 - N.T.S. NOT TO SCALE
 - - - EASEMENT LINE
 - PREVIOUSLY PLATTED LINE
- AREA OF LOTS:**
15.97 ACRES±
- AREA OF STREETS:**
5.85 ACRES±
- TOTAL AREA:**
21.82 ACRES±



AREA MAP N.T.S.
CITY OF SIOUX FALLS

NOTES:
THIS PLAT WAS PREPARED WITHOUT THE
BENEFIT OF A TITLE COMMITMENT.
THERE IS A 10' U.E. ALONG ALL STREETS.
ALL DISTANCES SHOWN ON CURVES ARE
CHORD DISTANCES.

BASIS OF BEARINGS ARE BASED ON THE
UNIVERSAL TRANSVERSE MERCATOR GRID - ZONE 14

Prepared By:
MIDWEST LAND SURVEYING, INC.
Land Surveying and GPS Consulting
309 W. 43rd Street Suite 101 Sioux Falls, South Dakota 57105
Phone: (605) 339-8901 FAX: (605) 274-8951